

**From:** [chiefexecutive@cornwallfoundation.com](mailto:chiefexecutive@cornwallfoundation.com)  
**To:** [ctcinfohub@gmail.com](mailto:ctcinfohub@gmail.com)  
**Subject:** News from Cornwall Community Foundation  
**Date:** 18 September 2023 11:24:50

---



## We have two exciting opportunities to join the CCF team!



This is an exciting opportunity to join Cornwall Community Foundation working alongside an incredible team, striving to make Cornwall and the Isles of Scilly a great place to live. Deadline to apply is 25th September.

### **Fund Development Manager**

If you have a strong customer relationship or client management background – possibly from major donor fundraising, we want to hear from you. [Find out more and apply.](#)

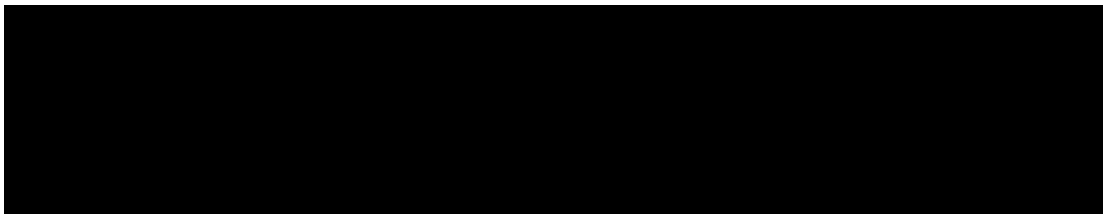
### **Events Officer**

If you are experienced in supporting or organising events of a variety of sizes and types, ideally in the voluntary sector, we want to hear from you. [Find out more and apply.](#)

---

### **One Trustee and his phone - Sam visits CHAOS Farm**

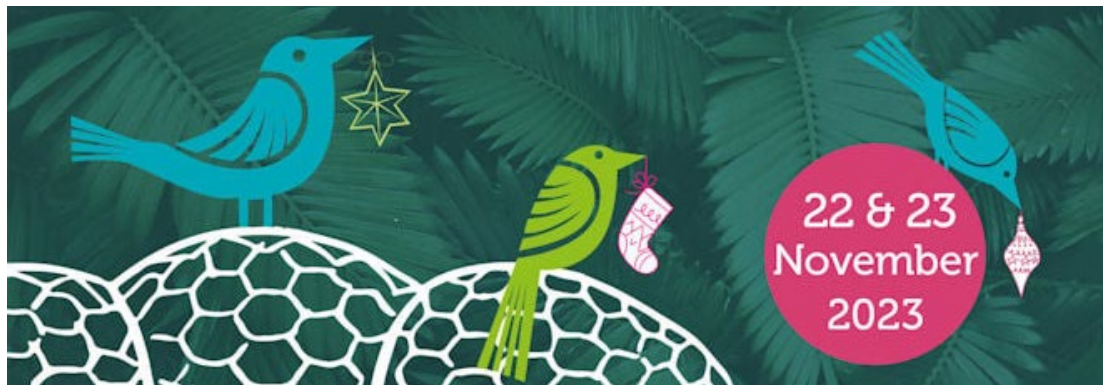
CCF Trustee, Sam Galsworthy, visits CHAOS Farm situated in the heart of the Roseland Peninsula. Working with a variety of individuals and groups within the community, they provide a welcoming, safe and enjoyable space to experience agriculture and the great outdoors. [Watch it here.](#)





### **Cornwall Christmas Fair tickets now on sale!**

On the 22nd & 23rd of November the Eden Project will play twinkly host to the Cornwall Christmas Fair. A glorious array of Christmas gifts, home accessories, fashion, ceramics, jewellery, skincare, children's clothes, toys and delicious Cornish produce will be on offer. Organised by a team of volunteers and supported by a generous spread of sponsors, all funds raised go directly to CCF. [Find out more and book tickets.](#)



### **The launch of Cornwall Connection at Schroders**

Last week saw the launch of Cornwall Connection, a CCF network for the new generation of supporters outside the county. We were kindly hosted by Peter Harrison of Schroders. We were proud to share the room with so many young people who all share the same passion - Cornwall. Thank you Tom Pennick of The Pearl Exchange for sharing their story and to Charlie Conchie for organising this event.

If you are interested in joining Cornwall Connection and supporting CCF or simply want to find out more, please contact Amy Buzza-Blackwell

on [amy@cornwallfoundation.com](mailto:amy@cornwallfoundation.com).



## UPCOMING EVENTS:

### St Austell Brewery Tour & Lunch

When: Saturday 30th September at 10am  
Where: St Austell Brewery

All money raised will go to CCF.

[Find out more and book your spot.](#)



### Charity Bridge and Afternoon Tea

When: Thursday 19th October at 2pm  
Where: Lanhydrock Village Hall

Tickets are £25pp. In aid of CFF and CSMF.

[Find out more and book your spot.](#)



[Click here to view the full list of upcoming events.](#)

## HOW YOUR DONATIONS HELP:

### Black Voices Cornwall create safe space for Cornwall's ethnically diverse communities at Celebration of Culture



Celebration of Culture is an event full of representing different cultures hosted by Black Voices Cornwall. This wonderful celebratory event enables ethnically diverse people to feel represented and as though they belong in Cornwall, this improves the mental health and wellbeing of so many people from these underrepresented communities across Cornwall. [Read more.](#)



## Leaving a gift in your will

Leaving a gift to Cornwall Community Foundation in your will is an incredible way to make a lasting impact in your community.

There are different ways you can do this, so if this is something you would be interested in learning more about, please contact our Development Director, Tamara Sherston-Baker on **01566 779333** or **tamara@cornwallfoundation.com**.

### Positive change for one and all

Thank you to our donors and supporters who make it possible for us to help Cornish communities. Please [follow this link](#) for more information about how you can help. For stories about the difference the Foundation makes for communities and people in Cornwall, [click here](#).



[Privacy notice](#)

[Unsubscribe](#)

**Cornwall Community Foundation**

Suite 1, Sheers Barton, Lawhitton, Launceston, Cornwall,  
PL15 9NJCharity number 1099977